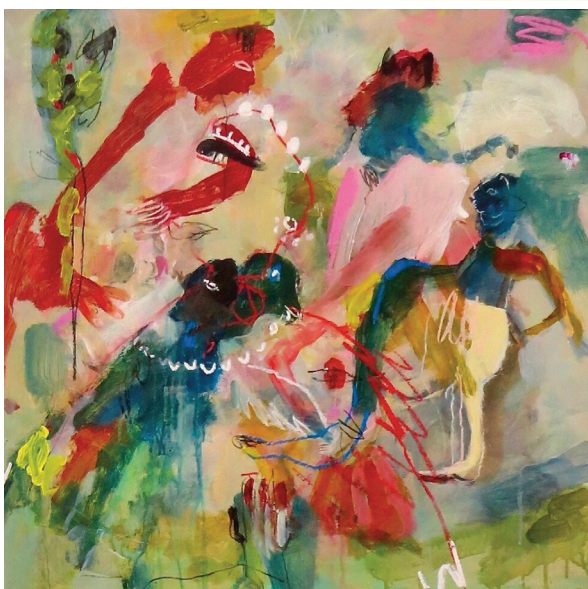


(top) Mike Wall, The Governors Backyard, printed 2022, archival giclee on cotton rag paper print, 86 x 99cm + frame and mount edition 2/10

(above) Rachel Carroll, After the Floods, 2022, mixed media on board, 35 x 65cm

(right) Tania Murphy, Crown-Ice Blue, 2022, earthenware, glaze, height 30cm

(below) Panchali Sheth, Love and birds, 2022, acrylic & oil on board 60 x 60 cm



## Summer Exhibitions at Rex Livingston Art + Objects

**Rex-Livingston Art + Objects**, located in the Arts Precinct on Katoomba St at 182-184, showcases an exciting exhibition program in the Blue Mountains during the Summer months of 2022. Having relocated from the eastern suburbs of Sydney in 2015 (after many years of exhibitions and events and the promotion of both emerging and professional career artists - as well as the resale of important investment artists) the gallery has enjoyed the support and interest from both local, interstate, and international visitors (pre covid) and collectors over the last several years in Katoomba. The gallery's summer program incorporates the exhibition of some of Australia's most collectable investment artists including the likes of Adam Cullen, Charles Blackman, Trevor 'Turbo' Brown, Martin Sharp and Albert Tucker among others.

### Summer 2022/23

**Jude Rose & Edward Wray-Bliss - Arborescence, 3 to 24 December 2022,**  
*Opening drinks - Saturday 10 December 2/4pm*

**Rose:** "My recent works delve deeper into the spiritual connection I have with the upper Blue Mountains and its magnificent gardens, my home now for the past 2 years. The light, the skies and the huge and diverse variety of flora and fauna continues to fascinate and overwhelm me... providing endless inspiration for my drawings on wood, linocuts, and oils on canvas. Most of these works have been produced in my Leura studio.... a time of deep reflection and exploration, and focus on what truly matters to me, nature and creativity, self-expression, connection with land, and our ancestral heritage."

**Wray-Bliss:** "I sculpt using wire and wood, combining the tensile malleability and organic warmth of these contrasting materials to evoke life, drama and movement. My figurative works revolve around ethical and psycho-emotional concerns. They speak to entrapment, inspiration, belief, bewilderment, and the constant search for meaning in confounding modernity. Allegorical and whimsical works are variously poignant and humorous: the meeting of our higher natures and base consumerism, the cacophony of competing ideas, humanity's bemusing confrontation with its others. My nature-inspired pieces evoke moments in the natural world. These include alighting birds, fire-wracked trees, and the poignant connections between the natural and man-made."

**Mike Wall - Hidden in Plain Sight, 6 to 30 January 2023,**  
*Opening drinks - Saturday 7 January 2/4pm*

Hidden in Plain Sight means to me, a process of flooding the image with detail. Initially it was to protect what was personal to me. When covid hit, I was limited to what I could see in my backyard. I am a landscape photographer and I want to find a new way of seeing where I live. In this body of work, I hope to hypnotise the viewer. Some find confusion in this complexity, but I find peace in the rhythm and repetition in these compositions.

**Rachel Carroll, Panchali Sheth & Tania Murphy - Toward Abstraction, 3 to 27 February 2023, opening drinks - Saturday 4 February 2/4pm**

All Art is essentially an abstraction. It is then up to the artist as to how far in or out of abstraction they wish to travel. All art begins as marks, colours and shapes and up close, all art is marks and colours and shapes. These are all layered, and the marks go from big to smaller as detail is applied. The marks and colours may be consistent and hold up the integrity of the artists path, but it is the composition that truly challenges us, as a viewer and as an artist. But this is where the excitement lies, like getting on a plane without a hotel booking...what could possibly go wrong? As artists we take these risks so you as the viewer can simply enjoy the outcome.

Our 'objects' line includes succulent pots and major works by ceramicist **Rebecca Verpoorten-Laws**, pop up sculptural gift cards and artists cards, Meerkat, and now Kangaroo, Koala and Emu assemblages by **Margaret Proctor**, hand sculpted jewellery by **Zohar** - ceramics by senior potter - **Russell French**. **Lesley Kinney** has delivered a range of Australiana terracotta pieces detailing animal and reptile imagery in slip, oxides, and sgraffito. **Rita Orsini** has a selected range of art lamps on view. **Michael Kapell**, furniture maker, added to our objects line with his stunning, sleek - architectural 'easy stools' in European Beech wood. Keep an eye on our exhibition space and make a point of visiting Rex-Livingston Art + Objects when in Katoomba.

David Rex-Livingston: Director  
182-184 Katoomba Street

www.rex-livingston.com  
ph 02 4782 9988